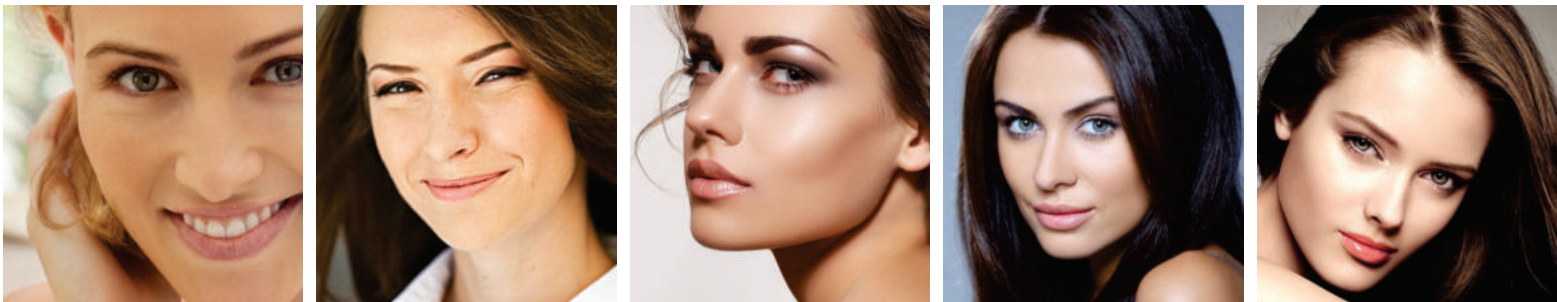


CARLTON

DERMATOLOGY



BEAUTIFUL YOU...

| PRODUCT NAME | COMPOSITION | PACKING |
|-------------------------------|---|---------|
| CREAM / OINTMENT / GEL | | |
| ACIVIRAL | Acyclovir 5% Cream | 5 GM |
| AMABEN | Adapalene 0.1% w/w & Hydrous Benzoyl Peroxide 2.5% w/w Gel | 15 GM |
| AZELEX 15/20 | Azelaic Acid 15% & 20% w/w Cream | 15 GM |
| BENZOMAC-2.5/5 | Hydrous Benzoyl Peroxide 2.5% & 5% w/v Gel | 15 GM |
| CICLOPEX | Ciclopirox Olamine 1% w/w Cream | 30 GM |
| CLOMAC | Clobetasol Propionate 0.05% w/w | 30 GM |
| CLOMYCIN-SA | Clobetasol Propionate 0.05% w/v + Salicylic Acid 6% w/w | 20 GM |
| CLOTOBEC | Clotrimazole 2.0 % w/w Cream | 20 GM |
| CLOTOPIX | Clotrimazole 2% Vaginal Gel with Applicator | 30 GM |
| CLOVIN GEL | Clindamycin Phosphate Eq to Clindamycin 1% w/w Gel | 15 GM |
| CLOVIN-A GEL | Clindamycin Phosphate 1.0% w/w + Adapalene 0.1% w/w Gel | 15 GM |
| CLOVIN-B GEL | Clindamycin Phosphate 1.0% w/w + Hydrous Benzoyl Peroxide 2.5% w/w | 15 GM |
| CLOVIN-N GEL | Clindamycin Phosphate 1% w/w + Nicotinamide 4% w/w Gel | 15 GM |
| DANDROTIN | Ketoconazole 2% w/w | 30 GM |
| DESALAB | Desonide 0.05% w/w Cream | 10 GM |
| EBONEL | Eberconazole Nitrate 1% w/w Cream | 15 GM |
| ENZO-S | Mometasone Furoate 0.1% + Salicylic Acid 5% Cream | 15 GM |
| EVORA | Pearl Evora Complex + Dermawhite + Claire Blanche | 15 GM |
| FUSIROL | Fusidic Acid 2% Cream | 10 GM |
| FUSIROL-M | Fusidic Acid 2% + Mometasone 0.025 % Cream | 15 GM |
| HYDRASOFT | All Weather Face and Body Cream | 75 GM |
| LEECON-30 | Luliconazole 1% | 30 GM |
| MOVEX | Halobetasol Propionate 0.05% Cream | 15 GM |
| MOVEX-S | Halobetasol Propionate 0.05% + Salicylic Acid 6% Cream | 15 GM |
| MUPISAT | Mupirocin 2% w/w | 5 GM |
| NADOTAC | Nadifloxacin 1% + Mometasone 0.1% + Miconazole 2% | 10 GM |
| ONICE-CT | Ofloxacin 0.75% + Ornidazole 2.0% + Itraconazole 1.0% + Clobetasol Propionate 0.05% | 15 GM |
| OPTINO | Clobetasol Propionate 0.05% w/v + Miconazole Nitrate 2.00% + Neomycin Sulphate 0.50% + Chlorocresol 0.10% | 15 GM |
| OXITRAIL | Oxiconazole Nitrate Cream 1% w/w | 30 GM |
| PARACIL | Light Liquid Paraffin 13.2 w/w + Soft Liquid Paraffin 10.2 w/w Cream | 50 GM |
| PEARL O BRIGHT HMT | Hydroquinone USP 2.0% w/w + Tretinoin BP 0.025% + Mometasone Furoate IP 0.1% w/w | 15 GM |
| PERMICLAR | Permethrin 5% w/w | 30 GM |
| PRETAC-0.03 | Tacrolimus 0.03% w/w Ointment | 10 GM |
| PRETAC-0.1 | Tacrolimus 0.1% w/w Ointment | 10 GM |

| | | |
|--------------------------|---|--------|
| REXOL 10 GM | Sertaconazole Nitrate 2.0% w/w | 15 GM |
| SOFTNESS PETROLEUM JELLY | Petro Jelly Enriched with Coconut and Olive Oil | 100 GM |
| SYNOBACT | Miconazole 2% w/w | 15 GM |
| THREESOLE | Clobetasol Propionate 0.05% w/w + Neomycin Sulphate 0.5% w/w + Miconazole Nitrate 2.0% w/w + Chlorhexidine Gluconate 0.2% w/w | 20 GM |
| TOTONIN-25/50 | Tretinoin 0.025% & 0.05% w/w | 15 GM |
| TRIMAC PRO | Triamcinolone Acetonide 0.1% w/w Dental Paste | 20 GM |
| TURBOFIN | Terbinafine Hydrochloride 1% w/w | 15 GM |

LOTION / SYRUP

| | | |
|--------------|--|--------|
| BECLOENT | Beclomethasone Dipropionate 0.025% | 50 ML |
| BECLOENT C | Beclomethasone Dipropionate 0.025% w/v & Clotrimazole 1.0% w/v Lotion | 30 ML |
| BECLOENT S | Betamethasone 0.064% w/v + Salicylic Acid 3.0% w/v Lotion | 50 ML |
| CALADINE | Calamine Lotion with Aloe Vera and Vitamin E | 100 ML |
| CLOMYCIN-SA | Clobetasol Propionate 0.05% w/w + Salicylic Acid 3.50% w/w | 30 ML |
| OCTANE-SF | Everyday Sunscreen with SPF 50 PA+++ (Broad Spectrum UVA/UVB) Lotion | 60 ML |
| PERMICLAR | Permethrin Lotion 5% w/v | 50 ML |
| SATIN WASH | Expert Intimate Hygiene Wash - Enriched with Sea Buckthorn Fruit Oil & Tea Tree Leaf Oil with pH3.0* | 100 ML |
| TAROMAC S | Coal Tar 4.25% w/w + Salicylic Acid 2% w/w Lotion | 50 ML |
| HETRRO SYRUP | Hydroxyzine 10 mg & 5 ml Syrup | 100 ML |

TABLETS

| | | |
|--------------|---|---------|
| ACIVIRAL-800 | Aciclovir 800 mg Tablets | 10x10 |
| CABERLINE | Cabergoline 0.5 mg Tablets | 10x1x4 |
| DANDROTIN | Ketoconazole 200 mg Tablets | 10x10 |
| DINZO-5 | Desloratadine 5 mg Tablets | 5x2x10 |
| EVO HAIR | L Isoleucine 14.6 mg + Iron 14.0 mg + L Glutamic Acid 61.8 mg + Vitamin B7 / Biotin / Vitamin H 30.0 mcg + Vitamin B9 / Folic Acid / Folate 100.0 Mcg + Magnesium 50.0 mg Tablets | 10x1x10 |
| FEXOL-M | Fexofenadine 120 mg + Montelukast 10 mg Tablets | 10x10 |
| HETRO-10/25 | Hydroxyzine 10 & 25 mg Tablets | 5x5x10 |
| IBET 10 | Biotin 10 mg Tablets | 10x10 |
| MECTOR | Albendazole 400 mg + Ivermectin 6 mg Tablets | 10x5x1 |
| TURBOFIN | Terbinafine 250 mg Tablets | 10x7 |



CAPSULES

| | | |
|------------|---|---------|
| ISOTONE-20 | Isotretinoin 20 mg Softgel Capsules | 10x1x10 |
| ITEK-100 | Itraconazole 100 mg | 10x10 |
| ITEK-200 | Itraconazole 200 mg | 10x10 |
| LABLO | Vitamin E 400 IU + Wheat Germ Oil 100 mg + Omega-3 Fatty Acids 30 mg IP 2.0% w/w cream | 10X1X15 |
| OMET-5000 | Lycopene 5000 mcg with Antioxidants | 10X10 |

SOAPS RANGE

| | | |
|--------------|---|-------|
| DANDROTIN | Ketoconazole 2% w/w Soap | 75 GM |
| DANDROTIN-C | Ketoconazole 2.0% w/w & Cetrimide 0.5% w/w Soap | 75 GM |
| FLUGULF | Fluconazole 1.0% w/w Soap | 75 GM |
| GLONY | Tale Fine + Allantoin + Glycerin, Soda Ash + Titanium Dioxide + Light Liquid Paraffin + Hydroxy Propyl Methyl Cellulose + Dowsil 580 Wax, Disodium EDTA + Butylated Hydroxytoluene + Codex 7101 + Perfume + Colour + Soap Noodles | 75 GM |
| GLOWDERMA | Palm & Coconut Oil Soap Noodles + Kokum Butter + Glycerin + Aloe Vera Extract + Olive Extract Soap | 75 GM |
| ITEK | Itraconazole 1.0% w/w Soap | 75 GM |
| LEECON | Luliconazole 0.1% w/w Soap | 75 GM |
| PEARL BRIGHT | Hydroquinone 0.1% + Glycerin 1% Soap | 75 GM |
| PERMICLAR | Permethrin 1% w/w The Efficient Miticidal Soap | 75 GM |

FACEWASH

| | | |
|-------------------|--|--------|
| IN-GLOW FACE WASH | Aqua, Glycerin + Cocamidopropyl Betaine + Triethanolamine, Carbopol + Polysorbate 20 + Carica papaya fruit extract + Phenoxyethanol + Disodium EDTA + Methylchloroisothiazolinone & Methylisothiazolinone + Perfume + Sodium | 100 ML |
|-------------------|--|--------|

HAIR CARE

| | | |
|-------------------|--|--------|
| AVICEL SERUM | Detangling Hair Serum with Peptides | 50 ML |
| DANDROTIN SHAMPOO | Ketoconazole + Biotin + D-Panthenol + Aloe Vera Extract | 100 ML |
| IN-GLOW SERUM | Natural Hair Serum | 117 ML |
| REGERO | Minoxidil Topical Solution 5% w/w | 60 ML |
| REGERO F | Minoxidil 5.0% w/v + Finasteride 0.1% w/v Solution Tray Pack | 60 ML |

www.shintoasia.com

INDIA OPERATIONS:

#110, INDUSTRIAL AREA,
PHASE-2, PANCHKULA,
HARYANA-134 113 (INDIA)
Email : shintoasia@gmail.com

CARLTON
DERMATOLOGY

HEADQUARTERS:

Ellicott City, Maryland,
USA-21042